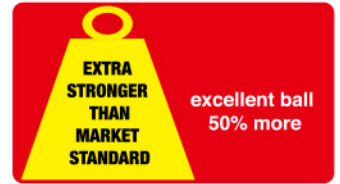




**Ball Lock Stainless Steel Cable Ties**

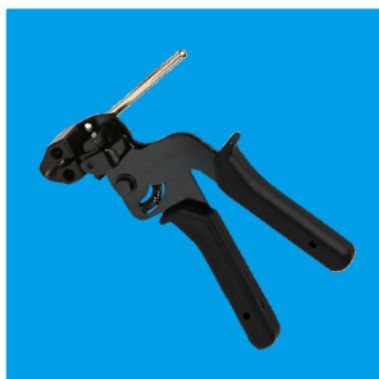
- Self-locking head design speeds installation and locks into place at any length along tie body
- Provides a strong, durable method of cable bundling
- Can be used in a wide range of indoor, outdoor, and underground (including direct burial)
- Smooth surfaces and rounded edges assures cable protection and worker safety
- Provide the ultimate support for network cables
- Material:
  - 304 stainless steel for general-purpose applications
  - 316 stainless steel for the most corrosive environments
- Working (Operation) Temperature: -80°C - + 538°C (-112°F - + 1000°F)
- Min Installation Temperature: -60°C (-76°F)
- Any Length is available
- Water absorption: none
- Flammability: non-flammable
- Ultraviolet resistance: excellent, Chemical resistance: excellent
- UL (Underwriters Laboratories) : File E258930 based newest standard UL62275



Item No.	Size (mm)	Size (in)	Tensile Strength	Min Bundle Diameter (mm)	Max Bundle Diameter (mm)	Min Bundle Diameter (in)	Max Bundle Diameter (in)	UL Type	Series
LH-SS-S-125-5	4.6x125	5.0	890N(200lb)	15.00	38.00	0.59	1.49	2	S Series
LH-SS-S-150-6	4.6x150	6.0	890N(200lb)	15.00	46.00	0.59	1.81	2	
LH-SS-S-200-8	4.6x200	8.0	890N(200lb)	15.00	61.90	0.59	2.43	2	
LH-SS-S-260-10	4.6x260	10.0	890N(200lb)	15.00	81.00	0.59	3.19	2	
LH-SS-S-290-11	4.6x290	11.5	890N(200lb)	15.00	90.60	0.59	3.56	2	
LH-SS-S-360-14	4.6x360	14.0	890N(200lb)	15.00	112.80	0.59	4.44	2	
LH-SS-S-520-21	4.6x520	20.5	890N(200lb)	15.00	163.80	0.59	6.45	2	
LH-SS-S-680-27	4.6x680	27.0	890N(200lb)	15.00	214.80	0.59	8.45	2	
LH-SS-S-840-33	4.6x840	33.0	890N(200lb)	15.00	265.70	0.59	10.46	2	
LH-SS-H-200-8	7.9x200	8.0	1600N(350lb)	15.00	61.90	0.59	2.43	2	H Series
LH-SS-H-260-10	7.9x260	10.0	1600N(350lb)	15.00	81.00	0.59	3.19	2	
LH-SS-H-290-11	7.9x290	11.5	1600N(350lb)	15.00	90.60	0.59	3.56	2	
LH-SS-H-360-14	7.9x360	14.0	1600N(350lb)	15.00	112.80	0.59	4.44	2	
LH-SS-H-520-21	7.9x520	20.5	1600N(350lb)	15.00	163.80	0.59	6.45	2	
LH-SS-H-680-27	7.9x680	27.0	1600N(350lb)	15.00	214.80	0.59	8.45	2	
LH-SS-H-840-33	7.9x840	33.0	1600N(350lb)	15.00	265.70	0.59	10.46	2	
LH-SS-EH-290-11	12x290	11.5	2300N(500lb)	15.00	90.60	0.59	3.56	2	EH Series
LH-SS-EH-360-14	12x360	14.0	2300N(500lb)	15.00	112.80	0.59	4.44	2	
LH-SS-EH-520-21	12x520	20.5	2300N(500lb)	15.00	163.80	0.59	6.45	2	
LH-SS-EH-680-27	12x680	27.0	2300N(500lb)	15.00	214.80	0.59	8.45	2	
LH-SS-EH-840-33	12x840	33.0	2300N(500lb)	15.00	265.70	0.59	10.46	2	



• Item No.: TSSTG01  
• for SS tie up to 7.9mm (350lb)

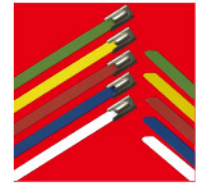


• Item No.: TSSTG02  
• for SS tie up to 7.9mm (350lb)



**● Ball Lock Coated Stainless Steel Cable Ties**

- Self-locking head design speeds installation and locks into place at any length along tie body
- Provides a strong, durable method of cable bundling
- Can be used in a wide range of indoor, outdoor, and underground (including direct burial)
- Smooth surfaces and rounded edges assures cable protection and worker safety
- Provide the ultimate support for network cables
- Material:
  - 304 stainless steel for general-purpose applications
  - 316 stainless steel for the most corrosive environments
  - Coated with Polyester for insulation purpose, and a better outdoor application
- Working (Operation) Temperature: -40°C - + 150°C (-40°F - + 302°F)
- Min Installation Temperature: -40°C (-40°F)
- Any Length is available
- Water absorption: none
- Flammability: non-flammable
- Ultraviolet resistance: excellent, Chemical resistance: excellent
- UL (Underwriters Laboratories) : File E258930 based newest standard UL62275
- Available color: Black, Yellow, Green, Red, Blue, White



**LISTED**  
POSITIONING DEVICE  
33AS  
E258930  
TYPE 21

Item No.	Size (mm)	Size (in)	Tensile Strength	Min Bundle Diameter (mm)	Max Bundle Diameter (mm)	Min Bundle Diameter (in)	Max Bundle Diameter (in)	UL Type	Series
LH-SSC-S-125-5	4.6x125	5.0	450N(100lb)	15.00	38.00	0.59	1.49	21	S Series
LH-SSC-S-150-6	4.6x150	6.0	450N(100lb)	15.00	46.00	0.59	1.81	21	
LH-SSC-S-200-8	4.6x200	8.0	450N(100lb)	15.00	61.90	0.59	2.43	21	
LH-SSC-S-260-10	4.6x260	10.0	450N(100lb)	15.00	81.00	0.59	3.19	21	
LH-SSC-S-290-11	4.6x290	11.5	450N(100lb)	15.00	90.60	0.59	3.56	21	
LH-SSC-S-360-14	4.6x360	14.0	450N(100lb)	15.00	112.80	0.59	4.44	21	
LH-SSC-S-520-21	4.6x520	20.5	450N(100lb)	15.00	163.80	0.59	6.45	21	
LH-SSC-S-680-27	4.6x680	27.0	450N(100lb)	15.00	214.80	0.59	8.45	21	
LH-SSC-S-840-33	4.6x840	33.0	450N(100lb)	15.00	265.70	0.59	10.46	21	

LH-SSC-H-200-8	7.9x200	8.0	800N(175lb)	15.00	61.90	0.59	2.43	21	H Series
LH-SSC-H-260-10	7.9x260	10.0	800N(175lb)	15.00	81.00	0.59	3.19	21	
LH-SSC-H-290-11	7.9x290	11.5	800N(175lb)	15.00	90.60	0.59	3.56	21	
LH-SSC-H-360-14	7.9x360	14.0	800N(175lb)	15.00	112.80	0.59	4.44	21	
LH-SSC-H-520-21	7.9x520	20.5	800N(175lb)	15.00	163.80	0.59	6.45	21	
LH-SSC-H-680-27	7.9x680	27.0	800N(175lb)	15.00	214.80	0.59	8.45	21	
LH-SSC-H-840-33	7.9x840	33.0	800N(175lb)	15.00	265.70	0.59	10.46	21	

LH-SSC-EH-290-11	12x290	11.5	1600N(350lb)	15.00	90.60	0.59	3.56	21	EH Series
LH-SSC-EH-360-14	12x360	14.0	1600N(350lb)	15.00	112.80	0.59	4.44	21	
LH-SSC-EH-520-21	12x520	20.5	1600N(350lb)	15.00	163.80	0.59	6.45	21	
LH-SSC-EH-680-27	12x680	27.0	1600N(350lb)	15.00	214.80	0.59	8.45	21	
LH-SSC-EH-840-33	12x840	33.0	1600N(350lb)	15.00	265.70	0.59	10.46	21	

**● Plain L lock Stainless Steel Cable Ties**

- The unique buckle design provides quick, easy application which can be easily be unfastened for reusing.
- Material: 304 Grade Stainless Steel (Plain Ties)

Item No.	Size (mm)	Size (in)	Max Bundle Diameter (mm)	Max Bundle Diameter (in)
LH-PLST-152-6	6.3x152	6.0	25.00	0.98
LH-PLST-225-9	6.3x225	9.0	63.00	2.48
LH-PLST-300-12	6.3x300	12.0	86.00	3.39
LH-PLST-450-18	6.3x450	18.0	137.00	5.39
LH-PLST-610-24	6.3x610	24.0	185.00	7.28







**Nylon Coated Stainless Steel Ties**

- The unique buckle design provides quick, easy application which can be easily unfastened for reusing.
- Material: 304 Grade Stainless Steel, Coated in Nylon 11

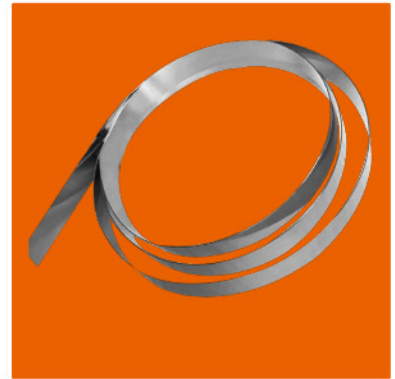
Item No.	Size (mm)	Size (in)	Max Bundle Diameter (mm)	Max Bundle Diameter (in)
LH-NCSST-229-9	6.3x229	6.0	63.00	2.48
LH-NCSST-305-12	6.3x304	9.0	86.00	3.39
LH-NCSST-457-18	6.3x457	12.0	137.00	5.39
LH-NCSST-457-18H	9.5x457	18.0	137.00	5.39



**Stainless Steel Banding Tape**

- Material: 304 Grade Stainless Steel
- Ideal for fixing insulation, bunding and securing of cables and pipes

Item No.	Width (mm)	Length (m)	Thickness (mm)	Width (in)	Length	Thickness (in)	Break Strength
LH-SSBT-9-3/8	9.5	30.5	0.6	3/8	100'	0.02	2670N(600lb)
LH-SSBT-12-1/2	12.7	30.5	0.7	1/2	100'	0.03	6680N(1500lb)
LH-SSBT-16-5/8	16.0	30.5	0.7	5/8	100'	0.03	8350N(1875lb)
LH-SSBT-19-3/4	19.0	30.5	0.7	3/4	100'	0.03	10000N(2250lb)



**Stainless Steel Buckles**

- Material: 304 Grade Stainless Steel
- Ideal for fixing insulation, bunding and securing of cables and pipes

Item No.	To Fit Band of Width (mm)	To Fit Band of Width (in)
LH-SSB-9-3/8	9.5	3/8
LH-SSB-12-1/2	12.7	1/2
LH-SSB-16-5/8	16.0	5/8
LH-SSB-19-3/4	19.0	3/4



**Stainless Steel Cable Ties Mounts**

- Material: 304/316 Grade Stainless Steel
- A durable and strong cable tie mount, designed to compliment stainless steel cable ties. Available with either an M4 or M6 fixing hole to accommodate a wide range of fixing methods. We recommend the use of stainless steel

Item No.	Length (mm)	Width (mm)	Height (mm)	Fixing Hole Size (mm)	Max Tie Width (mm)	Length (in)	Width (in)	Height (in)	Fixing Hole Size (in)	Max Tie Width (in)
LH-SSTM4	29.2	15.00	5.2	4.2	10.0	1.15	0.59	0.20	0.17	0.39
LH-SSTM6	29.2	15.00	5.2	6.2	10.0	1.15	0.59	0.20	0.24	0.39



**Stainless Steel Cable Ties Marker**

- Material: 304/316 Grade Stainless Steel

Item No.	Width (mm)	Length (mm)	For Tie width (mm)	Width (in)	Length (in)	For Tie width (in)
LH-SSM-9.5	9.5	90.0	4.6	0.37	3.54	0.18
LH-SSM-19	19	90.0	4.6	0.75	3.54	0.18

